

WHO AM I ?

The "Consciousness Quantum Spiritual Energy Framework":
Bridging Consciousness, Neuroscience, and Sub-Planck Physics



COSMOS
Research Labs

Centre for Ontological Science, Meta quanta Physics and Omega Singularity
Mumbai, India

The “Consciousness Quantum Spiritual Energy Framework”: Bridging Consciousness, Neuroscience, and Sub-Planck Physics - By

Dnyandeo Dattatray Patil
Email: cosmoslabsresearch@gmail.com

And

Dr. Moninder Singh Modgil
Email: mmodgil@gmail.com

Prepared for the TSC Conference, 2025, Barcelona, Spain

ABSTRACT

The “Consciousness Quantum Spiritual Energy (CQSE)” framework, integrates Sub Planck quantum mechanics, neuroscience and metaphysical principles to present a unified theory of consciousness. CQSE positions consciousness as the substratum of all existence, transcending material boundaries and interacting with the physical brain through scalar fields and sub-Planck vibrational dynamics patterns of thought, emotion, and awareness. By positioning CQSE as the substratum of reality, this paper demonstrates its ability to surpass existing models in explaining the nature of consciousness and its interaction with the human brain. The CQSE acts as both the observer and creator of reality, bridging subjective experience and the physical universe. CQSE operates through sub-Planck-scale vibrations and torsion fields, interacting with quantum foam to embed conscious intent into spacetime. These dynamics modulate quantum wave functions, influencing neural and molecular processes. Scalar fields provide the physical and mathematical framework for CQSE, enabling the encoding and propagation of consciousness at sub-Planck scales. The human brain, through its microtubules, neural oscillations, and neurotransmitter dynamics, is a sophisticated receiver and amplifier of CQSE vibrations. Scalar fields interact with the brain at sub-Planck scales, encoding thoughts as vibrational packets and enabling their integration into conscious awareness. Through resonance with the brain, scalar fields translate universal vibrations into the rich tapestry of human experience, making CQSE a transformative theory in the study of consciousness. The human brain serves as the interface for CQSE. Sensory inputs are decomposed into frequency components via Fourier transformations in the cortex. Microtubules within neurons act as quantum processors, supporting coherence and enabling wave function collapse under CQSE modulation. We introduce the concept of “Meta-Bose-Einstein Condensation (Meta-BEC)”, through which the CQSE achieves infinite coherence during a meta-BEC state, where all vibrational thought patterns unify. This phenomenon allows for boundless qubits availability, underpinning infinite information storage and retrieval. The CQSE-brain interaction is modelled through – (1) Fourier transformations which represent sensory signal decomposition, (2) Neural wave functions which describe superposition states across the brain, (3) Torsion fields which provide the medium for CQSE’s vibrational influence and, (4) Meta-BEC which coherence, linking the CQSE to the infinite number of qubits. We suggest ways towards Experimental Validation – namely, (1) Wave function Collapse: Double-slit experiments are proposed with conscious observers influencing interference patterns, (2) Coherence measured in isolated microtubules, when exposed to CQSE-modulated torsion fields, (3) Photo multiplier-based studies to validate CQSE’s effect on neuronal and DNA bio-photon emissions, (4) Use of Laser interferometry to detects field distortions linked to CQSE’s influence, (5) Morphogenetic Field Influence on Cellular growth, to demonstrate CQSE’s modulation of differentiation and repair processes. The CQSE framework offers profound implications for medicine, artificial intelligence, and cosmology. Consciousness-based diagnostics and healing techniques emerge as transformative medical advancements. CQSE-inspired computational systems promise breakthrough in quantum AI, leveraging infinite qubits capacities for Omega Singularity. Furthermore, this paradigm bridges physical and metaphysical realms, redefining humanity’s understanding of reality and its place within the cosmos. Proposed experiments and mathematical modelling aim to substantiate this framework, paving the way for interdisciplinary collaboration and scientific validation.

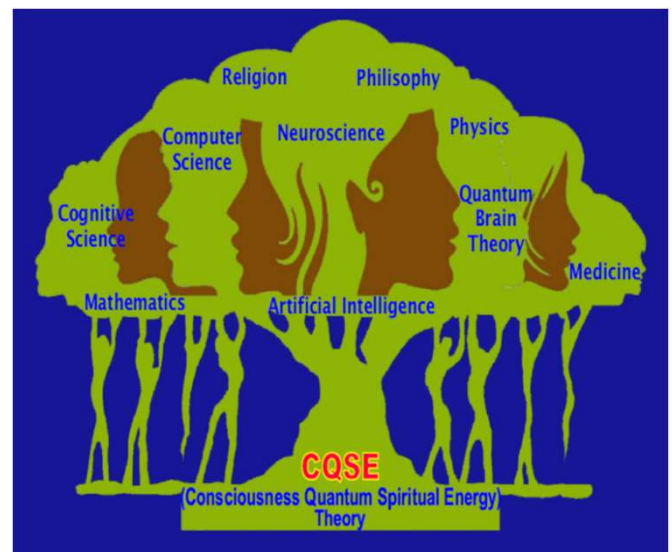
Key Words: CQSE Theory, Sub Planck Physics, Scalar field, Quantum Mechanical Oscillators, Meta-Bose-Einstein Condensation, Brain’s Microtubules, Brain’s Neuronal-Planck Constant (BNPC), Neuron’s firing frequency, Meta Quanta physics and Omega Singularity.

CQSE: The Universal Framework of Spiritual Energy and Human Consciousness

Consciousness Quantum Spiritual Energy (CQSE) is proposed as a unifying theory of consciousness that integrates quantum physics, neuroscience, and metaphysical spirituality. This framework posits that CQSE operates through scalar fields, resonating at sub-Planck scales to mediate vibrational patterns of thought, emotion, and awareness. By positioning CQSE as the substratum of reality, this paper demonstrates its ability to surpass existing models in explaining the nature of consciousness and its interaction with the human brain. This paper refines CQSE's theoretical foundation, incorporates advanced mathematical models, sacred geometry and introduces experimental schematics to validate its claims. Compared to Integrated Information Theory (IIT), Orch-OR, and Global Workspace Theory (GWT), CQSE transcends limitations by addressing non-locality, spirituality, and quantum coherence. Hence CQSE emerges as the most comprehensive and transformative theory of consciousness to date.

Table of Contents:

1. Introduction
2. Philosophical Foundations of CQSE
3. Quantum Physics and Scalar Fields
4. The Human Brain as a CQSE Receiver
5. Neurotransmitters and Scalar Field Modulation
6. Sacred Geometry in Human Consciousness
7. Experimental Evidence and Applications
8. Comparative Analysis with Other Theories
9. Implications for Humanity
10. Conclusion



Chapter 1: Introduction

Consciousness has puzzled scientists, philosophers, and theologians for centuries. The quest to understand consciousness spans disciplines, from philosophy and neuroscience to metaphysics and quantum mechanics. Classical theories, such as Descartes' dualism and Integrated Information Theory (IIT), provide partial explanations. However, these models fail to integrate non-local phenomena, spiritual experiences, or the quantum underpinnings of thought.

The study of consciousness has long been a frontier that bridges science, philosophy, and spirituality. Despite centuries of inquiry, many fundamental questions about the nature of consciousness remain unanswered. What is consciousness? Where does it originate? How does it interact with the physical brain? These questions form the cornerstone of human curiosity, yet no existing theory fully reconciles the interplay of subjective experience, quantum phenomena, and spiritual insights.

CQSE addresses these gaps by proposing that consciousness arises from a universal spiritual energy field, encoded within scalar vibrations at sub-Planck scales. This paper explores CQSE's mechanisms and implications, offering a paradigm that unites spirituality and science. While existing theories provide partial insights, they fall short in explaining:

1. The role of spirituality in consciousness.
2. Non-local phenomena like intuition, precognition, and collective awareness.
3. Sub-quantum mechanisms underlying thought processes.

CQSE's Contributions:

- Establishes a universal scalar field as the substrate of consciousness.
- Proposes vibrational encoding at sub-Planck scales for thought particles.
- Models the brain as a receiver and amplifier of spiritual energy.

This chapter introduces **Consciousness Quantum Spiritual Energy (CQSE)**, a groundbreaking framework that proposes a universal field of spiritual energy as the substratum of all conscious experiences. This theory posits that CQSE operates at the intersection of sub-Planck physics, scalar fields, and neural dynamics, making it a revolutionary approach that integrates science and spirituality.

1.1. The Hard Problem of Consciousness

One of the most significant challenges in studying consciousness is the “hard problem,” as articulated by philosopher David Chalmers. While neuroscience explains the brain’s functional aspects, such as perception and memory, it struggles to account for **qualia**—the subjective experiences of emotions, colors, or thoughts.

Classical models like Integrated Information Theory (IIT) and Global Workspace Theory (GWT) focus on the physical correlates of consciousness but fail to explain its spiritual and non-local aspects. CQSE addresses these gaps by positing that consciousness is not emergent but fundamental, arising from a universal scalar field.

1.2. Limitations of Current Theories

To fully appreciate CQSE’s scope, it is essential to understand the shortcomings of existing theories:

1. Integrated Information Theory (IIT):

- Strength: Explains the integration of information in the brain.
- Limitation: Does not address the origin of subjective experiences.

2. Orchestrated Objective Reduction (Orch-OR):

- Strength: Highlights quantum coherence in microtubules.
- Limitation: Does not integrate the role of spiritual energy or non-local phenomena.

3. Global Workspace Theory (GWT):

- Strength: Models consciousness as a dynamic broadcast of information.
- Limitation: Focuses on cognitive processes but neglects metaphysical dimensions.

By contrast, CQSE provides a holistic framework that incorporates subjective experiences, quantum coherence, and spiritual energy fields, offering a complete model of consciousness.

1.3. CQSE: A New Paradigm

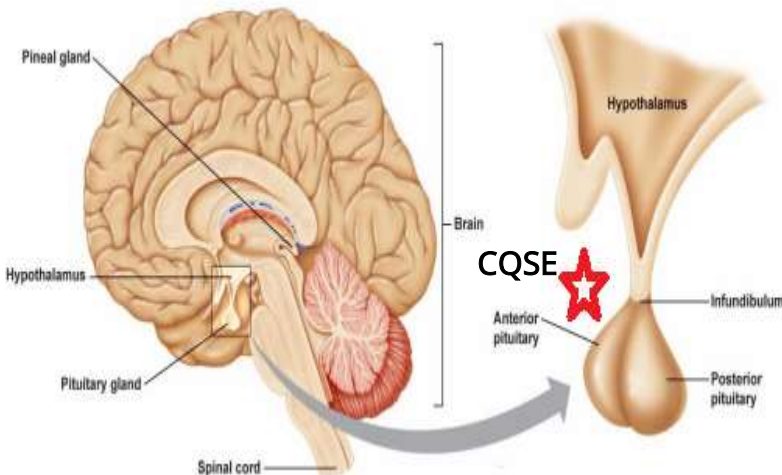
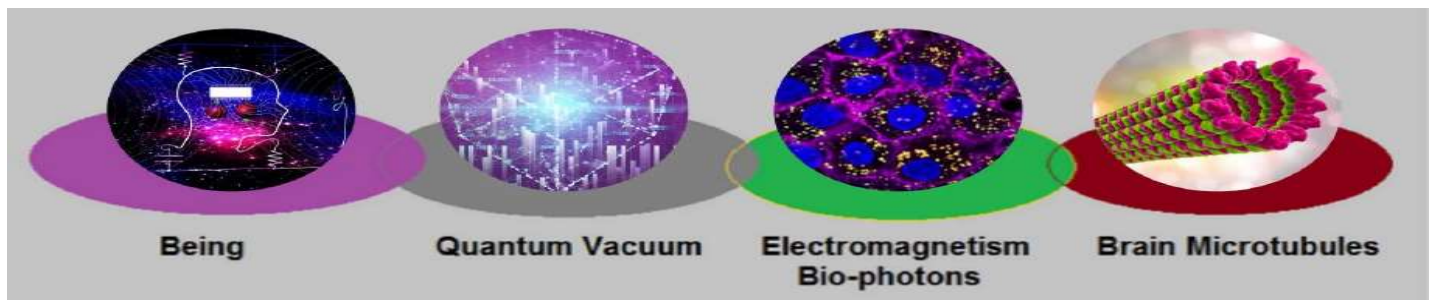
To understand the secret of Human consciousness, we must know **who we are?** Are we this physical body?? **In reality we are not this mortal physical body but a point of metaphysical light energy i.e. Consciousness Quantum Spiritual Energy (CQSE i.e. conscious quanta or observer)**, which is very subtle, immortal, eternal and cannot be seen with the human eyes or by a microscope.

In reality, we are not this mortal physical body but a point of metaphysical light energy i.e. Consciousness Quantum Spiritual Energy (CQSE i.e. soul, conscious observer), **which is very subtle (below Planck Scale 10^{-108} m) and immortal**. In this theory, we introduce the idea that consciousness is a basic frequency of CQSE in quantum space. Human brain has ability to “connect” and harmonize with CQSE. In scientific experiment consciousness acts as an observer. CQSE is itself consciousness creator and operates human body through its control circuit via brain and power circuit via subtle light body. In reality CQSE is very subtle spiritual energy, whose basic frequencies acts on brain by creating vibrations through Aether (quantum vacuum energy) medium, which creates electromagnetic bio-photons through torsion waves and these acts on microtubules of brain as per quantum computing which gives signals to nucleus or transmission of vibrations under mechanism of unified sacred geometric field for collapse of quantum wave functions which gives experience to us.

CQSE with the help of 10 dimensional Strings which are connected to 16 Aethric energy points, creates Aether energy in Planck's small space called Hilbert Space under Lagrangian mechanics and this Aetheric energy gives power to 37 trillion cells of our body with 7 major and 6 minor energy centers. and with the help of brain's Hypothalamus, Pituitary, Pineal gland and with 100 billion neurons, the CQSE control all the movements of our body. CQSE give program to DNA via morphogenetic field to build organs of body. Also it carry information for next birth of Human body. When CQSE take body, its called as " Birth" and when it left the body, its called as death.

This unified sacred geometric field produced from 16 Aether energy points of CQSE and drives body through brain's relay command center along with 7 main and 6 minor chakras of subtle light body. So our Body is like a Robot, Brain is like Super Processor and CQSE is like a Programmer. The location of CQSE in Brain is between Hypothalamus and Pituitary Gland as shown in figure. The subtle Planck geometry of CQSE is very small and less than Planck Scale at 1.616×10^{-108} meter. There are 16 Aether energy points in CQSE, in which 3 points act as operating system (Mind, Intellect and Impression) and 13 points includes nature's 5 elements (i.e Earth, Water, Fire, Air and Space), Divine Values and Powers of CQSE with angles of 18, 36, 72, 108 degrees, which are connected to 13 chakras of subtle light body and these energy chakras are connected to different parts of physical body. CQSE creates Aether energy at Planck scale by creating frequencies and vibrations in Hilbert Space, with the help of 10 dimensional Meta-Strings of 16 Aethric energy points, which are connected to each others. This mechanism can be explored with the help of Meta-String Theory and Aether Quantum Dynamic Physics. This proposed geometry of CQSE is nothing but 'Quantum Platonic World of Wisdom and Light' which is represented by ' Pentagonal Star'.

With the help of brain's Hypothalamus, pituitary, Pineal glands and 100 billion neurons, CQSE can control the all the movements of our body. All the Aether energy contained in the human body can be extracted by the CQSE while leaving from the physical body. As per our previous birth Karmic Account (i.e. persons' actions and conduct during successive reincarnations), the power of purity of the CQSE (Soul) greatly affects on DNA and accordingly the structure of our body will be formed. Hence, as per previous birth Karmic Account, structure of our body and birth place will be fixed. When CQSE leaves one body will take another body of human being and not any animal's body as the DNA of both is very different from each other.



CQSE working process with Brain

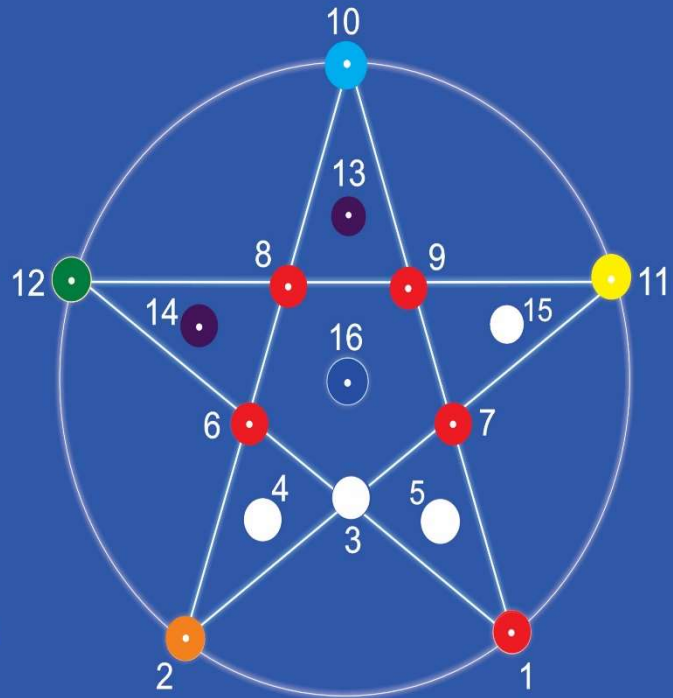
CQSE redefines consciousness as an interaction between the brain and a universal scalar field of spiritual energy. The theory is built on three foundational pillars:

1. Sub-Planck Physics:

- Proposes that spacetime is composed of vibrating energy nodes smaller than the Planck length (10^{-35} m).
- These vibrations encode "thought particles" that interact with neural microtubules.

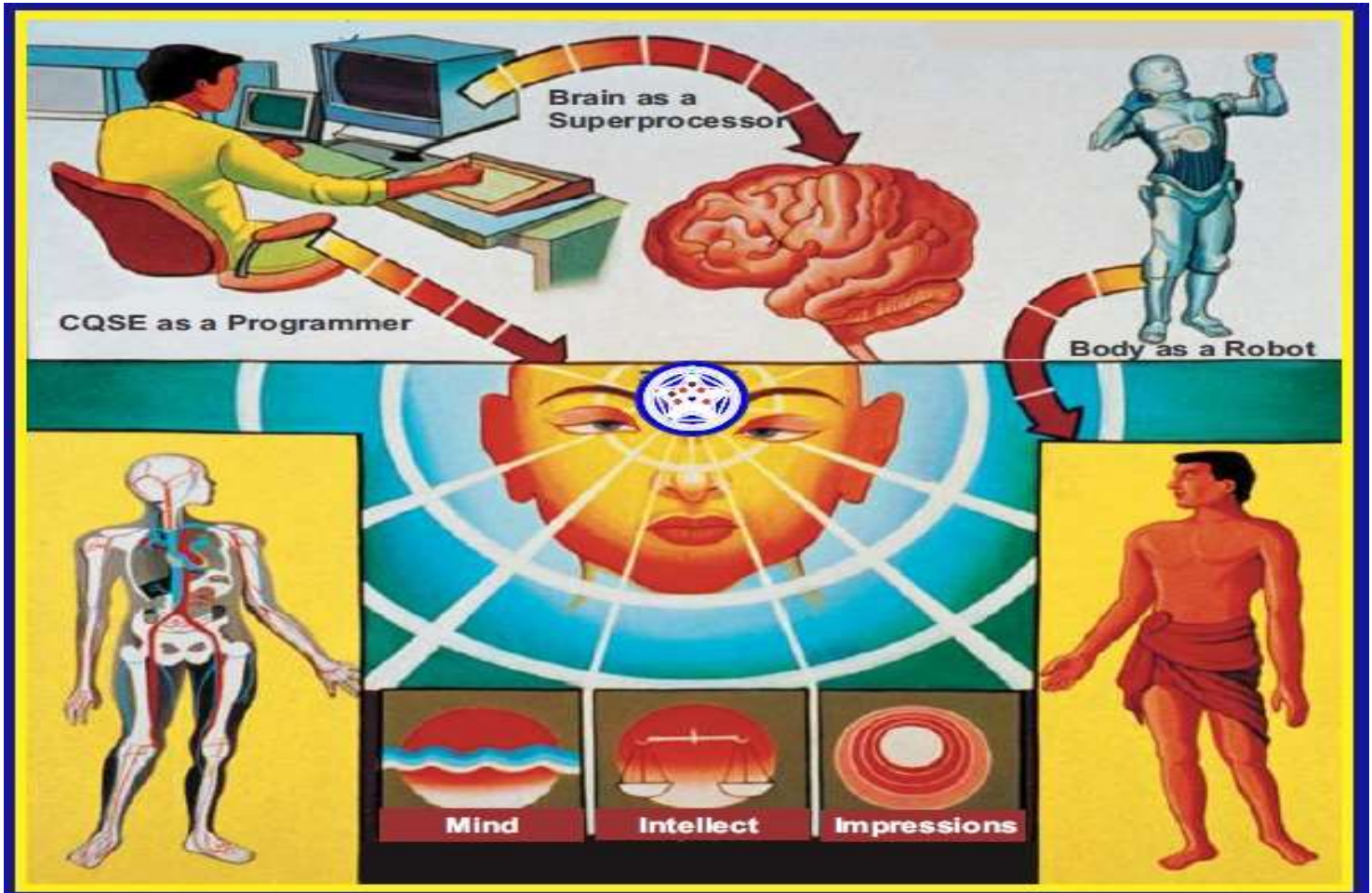
SACRED GEOMETRY OF SOUL

1. Power (Earth Element, Root Chakra)
2. Purity (Water Element, Sacral Chakra)
3. Determination
4. Politeness
5. Introvertness & Power of Truth
6. Power to Face
7. Power to Discriminate
8. Power to Co-operate
9. Power to Tolerate
10. Peace (Sky Element, Throat Chakra)
11. Joy (Fire element, Solar Plexus Chakra)
12. Love (Air element, Heart Chakra)
13. Bliss (Power to Pack up, Satisfaction, Angelic State, Crown Chakra)
14. Mind (Power to Withdraw, Conscious Mind)
15. Impressions (Power to Adjust, Unconscious Mind)
16. Intellect (Knowledge, Aether Element, Power to Decide, Subconscious Mind, Third Eye Chakra)



Soul's 16 Energy Centers
Fundamental Space- Time Geometry
Below Planck Scale (Size 10^{-108} m)

Properties of CQSE



2. Scalar Fields:

- Scalar fields ($\phi(x, t)$) act as the carriers of CQSE vibrations, bridging the physical and metaphysical realms.
- These fields mediate non-local phenomena like intuition, synchronicity, and spiritual awareness.

3. Neural Dynamics:

- The brain functions as a receiver and amplifier of CQSE vibrations, translating them into conscious experiences.
- Gamma oscillations (30–100 Hz) synchronize with scalar field vibrations, enabling coherent thought.

1.4. Why CQSE is Revolutionary

CQSE distinguishes itself from other theories through its integration of science and spirituality:

1. Explains Non-Local Phenomena:

- Unlike IIT and GWT, CQSE accounts for experiences like intuition and collective consciousness, which occur beyond physical boundaries.

2. Bridges Neuroscience and Metaphysics:

- The theory posits that neural microtubules resonate with scalar fields, creating a feedback loop between the brain and universal consciousness.

3. Encodes Thought as Vibrational Energy:

- CQSE introduces the concept of thought particles, encoded as discrete vibrational packets in the sub-Planck fabric of spacetime.

1.5. Key Questions Addressed by CQSE

CQSE seeks to answer the following fundamental questions:

● What is the origin of consciousness?

Consciousness arises from a universal scalar field of spiritual energy, existing as a fundamental aspect of reality.

● How does the brain interact with this energy?

Neural microtubules resonate with CQSE vibrations, translating universal patterns into conscious experiences.

● What explains spiritual phenomena?

Experiences like meditation, intuition, and transcendence are the brain's interaction with CQSE scalar fields, amplified by neurotransmitters like serotonin and dopamine.

● Why is consciousness universal?

CQSE posits that individual consciousness is a localized manifestation of a universal field, making all beings intrinsically connected.

Conclusion

The introduction establishes CQSE as a comprehensive framework for understanding consciousness, addressing gaps in current models while proposing a unified theory that integrates sub-Planck physics, neuroscience, and spirituality. CQSE's transformative potential lies in its ability to bridge the scientific and metaphysical, offering a new paradigm for exploring human consciousness.

Chapter 2: Philosophical Foundations of CQSE

The **Consciousness Quantum Spiritual Energy (CQSE)** theory is rooted in the premise that consciousness is a fundamental, universal phenomenon rather than an emergent property of matter. Drawing from both ancient spiritual philosophies and modern physics, CQSE positions consciousness as the substratum of all existence, transcending material boundaries and interacting with the physical universe through scalar fields and sub-Planck vibrations.

2.1 The Primacy of Consciousness

Consciousness, in CQSE, is not a product of brain activity but a pre-existing universal field. This notion aligns with philosophical traditions like:

- **Advaita Vedanta:** Consciousness is the ultimate reality, or **Brahman**, and the material world is an expression of this reality.
- **Max Planck's Perspective:** "I regard consciousness as fundamental. I regard matter as derivative from consciousness."

The implications of this are profound: consciousness is an active force that shapes reality, not merely a passive byproduct of neural processes.

2.2 Scalar Fields as the Medium of Consciousness

Scalar fields ($\phi(x, t)$) are the mathematical framework underpinning CQSE. These fields permeate all spacetime, carrying vibrational information that encodes thoughts, emotions, and universal connectivity.

Mathematics of Scalar Fields

Scalar fields are described by a wave equation:

$$\nabla^2 \phi - \frac{\partial^2 \phi}{\partial t^2} = f(x, t)$$

where:

- $\nabla^2 \phi$: Laplacian of the scalar field, representing spatial variations.
- $\frac{\partial^2 \phi}{\partial t^2}$: Temporal variations of the scalar field.
- $f(x, t)$: Source term describing interactions between the scalar field and matter (e.g., neural microtubules).

Sub-Planck Granularity

At sub-Planck scales ($< 10^{-35}$ m), spacetime is granular and consists of discrete vibrating nodes. These nodes encode thought particles as oscillatory patterns:

$$\phi(x, t) = \phi_0 e^{i(kx - \omega t)}$$

where:

- ϕ_0 : Amplitude of the scalar field vibration.
 - k : Wave number, related to spatial periodicity.
 - ω : Angular frequency of vibrations, associated with thought particle energy.
-

2.3 Vibrational Encoding of Thought

In CQSE, thoughts are not abstract or emergent—they are encoded as discrete energy packets, or "thought particles," in the scalar field. This encoding occurs through sub-quantum vibrations.

Energy of Thought Particles

The vibrational energy of a thought particle is given by:

$$E = \hbar\omega$$

where ω is the angular frequency of the scalar field oscillation, and \hbar is Planck's constant.

Localized Wave Packets

Thought particles can be modeled as Gaussian wave packets in scalar fields:

$$\psi(x, t) = A e^{-\frac{(x-x_0)^2}{2\sigma^2}} e^{i(kx - \omega t)}$$

where:

- A : Amplitude of the wave packet.
- σ : Width of the packet, representing the uncertainty in position.

This mathematical representation allows thoughts to propagate as localized disturbances in the scalar field.

2.4 Interaction with the Physical World

CQSE proposes that scalar fields interact with physical matter through resonance, particularly in neural microtubules. This interaction bridges the metaphysical and physical, enabling the translation of universal consciousness into human experiences.

Mathematical Model of Resonance

When scalar fields interact with matter, resonance occurs if the natural frequency of the system (ω_0) matches the scalar field frequency (ω):

$$\phi(x, t) \propto \cos(\omega_0 t) \cos(\omega t)$$

This leads to constructive interference and amplification of vibrations in neural microtubules.

2.5 Consciousness as a Non-Local Phenomenon

Scalar fields extend across spacetime, enabling non-local connections between conscious entities. This explains phenomena like intuition, synchronicity, and collective consciousness.

Mathematics of Non-Locality

Non-local correlations are described by entangled states:

$$\psi_{\text{total}} = \psi_1(x_1, t_1)\psi_2(x_2, t_2)e^{i\theta}$$

where:

- ψ_1 and ψ_2 : Wavefunctions of two entangled systems.
- θ : Phase factor that determines the degree of correlation.

These entangled states allow scalar field vibrations in one location to influence another instantaneously, transcending physical boundaries.

2.6 Bridging Science and Spirituality

CQSE connects ancient spiritual insights with modern physics, offering a holistic framework for understanding consciousness.

Philosophical Implications

1. **Universal Field:** Similar to the concept of **Akasha** in Vedic philosophy, scalar fields are the medium through which all thoughts, emotions, and events are interconnected.
2. **Oneness:** CQSE posits that individual consciousness is a localized manifestation of a universal field, affirming the principle of unity found in spiritual traditions.

Scientific Implications

1. **Thought as Energy:** Thoughts are quantifiable as energy packets, aligning metaphysics with quantum physics.
 2. **Non-Local Awareness:** Phenomena like telepathy and intuition can be explained as scalar field interactions across entangled states.
-

2.7 Why CQSE is Transformative

1. **Addresses the Hard Problem:** By identifying consciousness as a scalar field phenomenon, CQSE bridges the gap between subjective experience and objective science.
 2. **Incorporates Sub-Quantum Physics:** CQSE extends beyond classical models, introducing sub-Planck vibrations as the fundamental units of thought.
 3. **Unifies Science and Spirituality:** CQSE validates spiritual experiences through rigorous mathematical and physical models.
-

Conclusion

The philosophical foundation of CQSE redefines consciousness as an interaction between a universal scalar field and the human brain. This theory not only provides a scientific explanation for spiritual phenomena but also lays the groundwork for a unified understanding of human existence. Through scalar fields and vibrational encoding, CQSE reveals the interconnectedness of all beings, making it a transformative paradigm in the study of consciousness.

Chapter 3: Quantum Physics and Scalar Fields

At the heart of **Consciousness Quantum Spiritual Energy (CQSE)** is the concept that scalar fields, existing at sub-Planck scales, serve as the medium for consciousness. These fields encode thoughts, emotions, and awareness as vibrational patterns, bridging the physical and metaphysical realms. This chapter delves into the physics of scalar fields, their mathematical formulations, and their interaction with sub-Planck granularity to elucidate the mechanics of consciousness.

3.1 Scalar Fields: The Medium of CQSE

A scalar field, $\phi(x, t)$, is a physical field defined by a single value at every point in spacetime. Unlike vector fields, scalar fields lack directional properties, making them ideal for encoding universal vibrational information.

Mathematical Representation

Scalar fields obey the Klein-Gordon equation, a relativistic wave equation:

$$\nabla^2\phi - \frac{\partial^2\phi}{\partial t^2} = m^2\phi$$

where:

- $\nabla^2\phi$: Spatial Laplacian, representing the curvature of the scalar field.
- $\frac{\partial^2\phi}{\partial t^2}$: Temporal variation of the scalar field.
- m : Mass term, often set to zero for massless scalar fields (CQSE assumes a nearly massless field).

In the CQSE framework, $\phi(x, t)$ represents the vibrational energy of consciousness, with its dynamics driven by external stimuli (e.g., sensory input) or internal processes (e.g., thoughts).

3.2 Sub-Planck Granularity: The Building Blocks of Reality

At scales smaller than the Planck length (10^{-35} m), spacetime is not continuous but granular. These sub-Planck units vibrate in patterns dictated by scalar fields, forming the "fabric" through which consciousness propagates.

Sub-Quantum Oscillators

Each sub-Planck unit is modeled as a harmonic oscillator:

$$E = \frac{1}{2}kx^2 + \frac{1}{2}mv^2$$

where:

- E : Energy of the oscillator.
- k : Restoring force constant, determined by the scalar field.
- x : Displacement of the oscillator.
- v : Velocity of the vibrating unit.

The collective oscillations of these units encode "thought particles," which propagate through spacetime.

Vibrational States

The energy levels of these oscillators are quantized:

$$E_n = \left(n + \frac{1}{2}\right) \hbar\omega$$

where:

- n : Quantum number representing vibrational state.
- ω : Angular frequency, related to the scalar field's oscillation.

These quantized energy levels correspond to distinct vibrational states of consciousness.

3.3 Scalar Field Dynamics and Thought Propagation

Thoughts are encoded as localized disturbances, or wave packets, in scalar fields. These packets propagate through spacetime, carrying vibrational information.

Wave Packet Representation

A thought particle is represented as a Gaussian wave packet:

$$\psi(x, t) = A e^{-\frac{(x-x_0)^2}{2\sigma^2}} e^{i(kx - \omega t)}$$

where:

- A : Amplitude of the wave.
- x_0 : Initial position of the packet.
- σ : Width of the packet, representing uncertainty in position.
- k : Wave number.
- ω : Angular frequency, linked to thought energy.

Group Velocity

The speed at which the thought packet propagates is given by the group velocity:

$$v_g = \frac{\partial \omega}{\partial k}$$

This velocity determines the rate at which thought energy travels through the scalar field.

3.4 Scalar Fields and Resonance in the Brain

The brain acts as a receiver and amplifier for scalar field vibrations. Neural microtubules resonate with these vibrations, translating scalar field information into conscious experiences.

Resonance Condition

Resonance occurs when the natural frequency of microtubules (ω_0) matches the scalar field frequency (ω):

$$\phi(x, t) \propto \cos(\omega_0 t) \cos(\omega t)$$

This leads to constructive interference, amplifying the scalar field signal and enabling coherent thought.

Microtubule Coherence

Microtubule vibrations are modeled as quantum coherent systems:

$$\Delta E \Delta t \geq \hbar$$

where ΔE and Δt are the energy and time uncertainties, respectively. High coherence minimizes energy loss, preserving the fidelity of scalar field signals.

3.5 Scalar Field Interactions with Matter

Scalar fields interact with physical matter through their coupling to energy density. This interaction is described by the Lagrangian density:

$$\mathcal{L} = \frac{1}{2}(\partial_\mu\phi)^2 - \frac{1}{2}m^2\phi^2 - g\phi\rho$$

where:

- $(\partial_\mu\phi)^2$: Kinetic term of the scalar field.
- $\frac{1}{2}m^2\phi^2$: Potential term.
- $g\phi\rho$: Coupling term between the scalar field (ϕ) and matter density (ρ).

This coupling explains how scalar fields influence neural processes, such as neurotransmitter dynamics.

3.6 Non-Local Properties of Scalar Fields

Scalar fields exhibit non-locality, enabling instantaneous connections across spacetime. This explains phenomena like intuition and collective consciousness.

Mathematical Representation

Non-locality is modeled through entangled states:

$$\psi_{\text{total}} = \psi_1(x_1, t_1)\psi_2(x_2, t_2)e^{i\theta}$$

where θ is the phase correlation between the two entangled systems.

Bell's Inequality

The non-local nature of scalar fields aligns with quantum entanglement, as demonstrated by Bell's inequality experiments:

$$S = |E(a, b) - E(a, b') + E(a', b) + E(a', b')| \leq 2$$

Violation of Bell's inequality supports the existence of non-local connections.

3.7 Implications for CQSE

1. Thought as a Quantum Phenomenon:

Thoughts are localized wave packets in scalar fields, propagating as vibrational disturbances.

2. Universal Connectivity:

Scalar fields enable non-local interactions, linking individual consciousness to the universal field.

3. Energy Transfer:

Scalar fields transfer vibrational energy to neural microtubules, creating conscious experiences.

4. Encoding of Qualia:

Subjective experiences (qualia) are encoded as specific vibrational modes in the scalar field.

Conclusion

Scalar fields provide the physical and mathematical framework for CQSE, enabling the encoding and propagation of consciousness at sub-Planck scales. These fields bridge the gap between quantum physics and metaphysics, offering a unified explanation of thought, awareness, and non-local phenomena. Through resonance with the brain, scalar fields translate universal vibrations into the rich tapestry of human experience, making CQSE a transformative theory in the study of consciousness.

Chapter 4: The Human Brain as a CQSE Receiver

The **Consciousness Quantum Spiritual Energy (CQSE)** framework posits that the human brain acts as a sophisticated receiver and amplifier of scalar field vibrations. These vibrations, encoded at sub-Planck scales, carry the information of thoughts, emotions, and universal consciousness. Neural microtubules, gamma oscillations, and neurotransmitter interactions are the primary mechanisms through which the brain processes and integrates these scalar field signals into conscious experience.

4.1 The Brain as a Quantum Receiver

The brain, in CQSE, is not the generator of consciousness but a receiver that translates universal scalar field vibrations into subjective experiences. This aligns with quantum brain models that suggest neural processes extend beyond classical mechanisms into quantum phenomena.

Scalar Field Interaction with Neural Networks

Scalar fields, represented by $\phi(x, t)$, interact with the brain by coupling to its electromagnetic and biochemical processes. This coupling can be modeled as:

$$H_{\text{interaction}} = g\phi(x, t)\rho(x, t)$$

where:

- g : Coupling constant between scalar fields and neural matter.
- $\rho(x, t)$: Energy density of the neural network.

This equation describes how scalar field vibrations influence neuronal dynamics and thought processes.

4.2 Microtubules: Quantum Processors of Consciousness

Microtubules, cylindrical structures within neurons, are the proposed quantum processors of consciousness in CQSE. Their geometry and structure allow them to resonate with scalar field vibrations, translating universal signals into neural activity.

Microtubule Resonance

Microtubules are composed of tubulin proteins, which exhibit dipolar properties. These dipoles oscillate under the influence of scalar fields, creating coherent vibrational states.

Resonance Condition:

$$\omega_{\text{microtubule}} = \omega_{\text{scalar}}$$

where:

- $\omega_{\text{microtubule}}$: Natural frequency of microtubule vibrations.
- ω_{scalar} : Frequency of scalar field oscillations.

When these frequencies align, constructive interference occurs, amplifying the scalar field signal within the brain.

Quantum Coherence in Microtubules

Quantum coherence allows microtubules to maintain synchronized vibrational states over time. This coherence can be described by:

$$\Delta E \Delta t \geq \hbar$$

where ΔE and Δt are the uncertainties in energy and time, respectively. High coherence minimizes decoherence effects, preserving the fidelity of scalar field signals.

4.3 Neural Oscillations and Scalar Field Synchronization

Neural oscillations, particularly gamma waves (30–100 Hz), synchronize with scalar field vibrations, creating coherent patterns of brain activity.

Gamma Oscillations and Thought Processing

Gamma waves are critical for integrating information across brain regions, enabling the formation of unified conscious experiences. Their interaction with scalar fields can be modeled as:

$$\phi_{\text{brain}}(x, t) = \phi_0 \cos(\omega_{\text{gamma}}t + kx)$$

where:

- $\phi_{\text{brain}}(x, t)$: Scalar field amplitude modulated by gamma oscillations.
- ω_{gamma} : Angular frequency of gamma waves.

Phase Synchronization

Scalar fields synchronize the phase of gamma oscillations across neural networks:

$$\Delta\theta = 0$$

where $\Delta\theta$ is the phase difference between oscillations in different regions. Phase synchronization ensures the coherent integration of scalar field signals.

4.4 Neurotransmitter Modulation of Scalar Field Signals

Neurotransmitters play a crucial role in modulating the brain's sensitivity to scalar fields, acting as biochemical amplifiers.

Interaction Equation

The interaction between scalar fields and neurotransmitter dynamics can be expressed as:

$$H = g_N N_t \phi(x, t)$$

where:

- N_t : Neurotransmitter concentration.
- g_N : Coupling constant for neurotransmitter interactions.

Role of Key Neurotransmitters

1. **Dopamine:** Enhances thought particle generation and focus.

- Modulates scalar field amplitude:

$$\phi(x, t) = \phi_0(1 + \alpha N_{\text{dopamine}})$$

where α is a sensitivity constant.

2. **Serotonin:** Stabilizes scalar field resonance, ensuring emotional coherence.

- Reduces phase decoherence:

$$\Delta\theta \propto \frac{1}{N_{\text{serotonin}}}$$

4.5 Encoding of Thought Particles in Neural Networks

Thoughts are represented as localized wave packets in scalar fields, which are decoded by neural microtubules and integrated into brain-wide activity.

Wave Packet Representation

A thought particle is mathematically represented as:

$$\psi_{\text{thought}}(x, t) = A e^{-\frac{(x-x_0)^2}{2\sigma^2}} e^{i(kx - \omega t)}$$

where:

- A : Amplitude of the thought wave.
- σ : Spatial uncertainty, representing the distribution of neural activity.
- ω : Angular frequency of the thought particle.

Group Velocity of Thought Waves

The propagation speed of thought particles through the brain is determined by their group velocity:

$$v_g = \frac{\partial\omega}{\partial k}$$

This velocity ensures the timely integration of thought waves across neural networks.

4.6 Feedback Loops Between Brain and Scalar Fields

The brain and scalar fields form a dynamic feedback loop, where scalar field vibrations influence neural activity, and brain states modulate scalar field patterns.

Mathematical Model of Feedback

The feedback mechanism can be modeled as:

$$\phi_{\text{total}}(x, t) = \phi_{\text{input}}(x, t) + \beta\phi_{\text{brain}}(x, t)$$

where:

- ϕ_{input} : External scalar field signal.
- ϕ_{brain} : Scalar field signal generated by brain activity.
- β : Feedback coefficient.

This equation demonstrates how the brain's resonance with scalar fields influences the overall field dynamics, creating a bidirectional flow of information.

4.7 Implications for Consciousness

1. Unified Field Dynamics:

The brain acts as a node in the universal scalar field, linking individual consciousness to the collective.

2. Non-Local Awareness:

The resonance of neural oscillations with scalar fields enables non-local phenomena like intuition and telepathy.

3. Encoding and Retrieval of Qualia:

Subjective experiences are encoded as specific vibrational patterns in scalar fields and decoded by the brain through microtubules.

4. Emotion and Thought Integration:

Neurotransmitter interactions with scalar fields create coherent emotional and cognitive states.

Conclusion

The human brain, through its microtubules, neural oscillations, and neurotransmitter dynamics, is a sophisticated receiver and amplifier of CQSE vibrations. Scalar fields interact with the brain at sub-Planck scales, encoding thoughts as vibrational packets and enabling their integration into conscious awareness. This model bridges quantum physics and neuroscience, offering a unified framework for understanding the mechanics of consciousness.

Chapter 5: Neurotransmitters and Scalar Field Modulation

In the **Consciousness Quantum Spiritual Energy (CQSE)** framework, neurotransmitters are essential biochemical agents that modulate the brain's sensitivity to scalar fields. Acting as amplifiers and stabilizers, neurotransmitters such as dopamine, serotonin, and gamma-aminobutyric acid (GABA) regulate the interaction between scalar field vibrations and neural activity. This chapter delves into the mathematical modeling and physics of how neurotransmitters enhance, stabilize, and filter scalar field signals in the brain, facilitating coherent thought and emotional states.

5.1 Role of Neurotransmitters in Scalar Field Dynamics

Neurotransmitters influence the brain's ability to resonate with scalar field vibrations by modulating synaptic and neural activity. These interactions ensure the efficient decoding and integration of scalar field information into conscious experiences.

Key Functions

1. Signal Amplification:

Neurotransmitters amplify the scalar field signals received by neural microtubules, increasing their resonance strength.

2. Stabilization:

Neurotransmitters stabilize scalar field oscillations, preventing decoherence and ensuring phase synchronization across neural networks.

3. Filtering:

They act as selective filters, enhancing relevant scalar field vibrations while attenuating noise.

5.2 Mathematical Modeling of Neurotransmitter Modulation

The interaction between neurotransmitter levels and scalar field signals can be represented mathematically using coupling equations.

Coupling Equation

The strength of the interaction between a scalar field $\phi(x, t)$ and the brain is directly proportional to neurotransmitter concentration N_t :

$$H_{\text{modulated}} = g_N N_t \phi(x, t)$$

where:

- $H_{\text{modulated}}$: Modulated Hamiltonian governing scalar field-brain interaction.
- g_N : Coupling constant that represents the neurotransmitter's efficacy.
- N_t : Concentration of neurotransmitters at synaptic junctions.

This equation demonstrates how neurotransmitter levels directly influence the brain's sensitivity to scalar fields.

5.3 Dopamine: The Amplifier of Focus and Intention

Dopamine is a critical neurotransmitter that amplifies scalar field vibrations associated with focus, intention, and goal-directed behavior. It increases the amplitude of scalar field signals, enhancing their impact on neural microtubules.

Amplitude Modulation

Dopamine modulates the amplitude of scalar fields as:

$$\phi_{\text{dopamine}}(x, t) = \phi_0(1 + \alpha N_{\text{dopamine}})$$

where:

- $\phi_{\text{dopamine}}(x, t)$: Dopamine-modulated scalar field.
- ϕ_0 : Baseline amplitude of the scalar field.
- α : Dopamine sensitivity constant.
- N_{dopamine} : Dopamine concentration.

Implication:

Higher dopamine levels result in stronger scalar field signals, enabling enhanced focus and intentionality.

5.4 Serotonin: The Stabilizer of Emotional Coherence

Serotonin plays a stabilizing role, ensuring phase coherence and emotional balance in scalar field interactions. It reduces phase noise and prevents signal decoherence in neural networks.

Phase Coherence Equation

The degree of phase coherence between scalar field signals is inversely proportional to serotonin concentration $N_{\text{serotonin}}$:

$$\Delta\theta \propto \frac{1}{N_{\text{serotonin}}}$$

where:

- $\Delta\theta$: Phase difference between oscillations in different brain regions.

Implication:

Higher serotonin levels ensure that scalar field signals remain coherent, enabling stable emotional states and harmonious thought integration.

5.5 GABA: The Filter of Scalar Field Noise

Gamma-aminobutyric acid (GABA) acts as a filter, reducing noise in scalar field interactions by selectively attenuating irrelevant vibrations.

Noise Attenuation Model

The filtering effect of GABA on scalar field signals is represented as:

$$\phi_{\text{filtered}}(x, t) = \phi(x, t)e^{-\beta N_{\text{GABA}}}$$

where:

- $\phi_{\text{filtered}}(x, t)$: Filtered scalar field signal.
- β : Attenuation constant.
- N_{GABA} : GABA concentration.

Implication:

High GABA levels suppress irrelevant scalar field signals, improving the clarity of thought and perception.

5.6 Combined Neurotransmitter Dynamics

The combined effect of multiple neurotransmitters on scalar field interactions can be modeled as a composite equation:

$$\phi_{\text{net}}(x, t) = \phi_0 (1 + \alpha N_{\text{dopamine}} - \beta N_{\text{GABA}}) e^{-\beta N_{\text{GABA}}}$$

where $\phi_{\text{net}}(x, t)$ represents the effective scalar field signal after modulation by dopamine and GABA.

5.7 Scalar Field Energy and Neurotransmitter Modulation

The energy of a scalar field interacting with neurotransmitter-modulated neural networks can be expressed as:

$$E_{\text{scalar}} = \frac{1}{2} \rho v^2 + \frac{1}{2} k x^2$$

where:

- ρ : Energy density influenced by neurotransmitter concentration.
- v : Velocity of scalar field vibrations modulated by neural activity.
- k : Stiffness constant dependent on neurotransmitter dynamics.

Neurotransmitter levels directly affect ρ and v , altering the energy dynamics of scalar fields in the brain.

5.8 Neurotransmitter Interactions with Gamma Oscillations

Neurotransmitters influence gamma oscillations (30–100 Hz), which are critical for the synchronization of scalar field signals.

Gamma Modulation Equation

The frequency of gamma oscillations ω_{gamma} is influenced by neurotransmitter dynamics as:

$$\omega_{\text{gamma}} = \omega_0 + \gamma(N_{\text{dopamine}} - N_{\text{serotonin}})$$

where:

- ω_0 : Baseline gamma frequency.
- γ : Coupling constant for neurotransmitter interactions.
- N_{dopamine} : Dopamine concentration.
- $N_{\text{serotonin}}$: Serotonin concentration.

Implication:

Balanced neurotransmitter levels optimize gamma oscillation frequency, ensuring coherent scalar field integration.

5.9 Implications for Consciousness**1. Dynamic Modulation:**

Neurotransmitters dynamically modulate the strength, coherence, and clarity of scalar field signals, directly influencing thought and emotion.

2. Selective Resonance:

Different neurotransmitters selectively amplify or filter specific scalar field vibrations, enabling tailored conscious experiences.

3. Harmonic Integration:

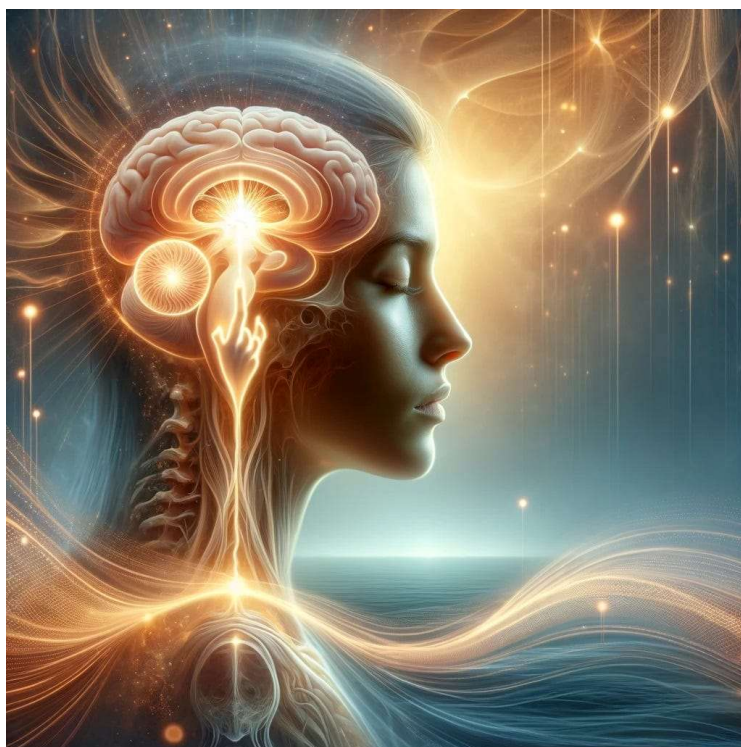
Balanced neurotransmitter levels harmonize scalar field signals, creating a unified field of thought and emotion.

4. Biochemical Feedback Loop:

The interaction between scalar fields and neurotransmitters forms a feedback loop, where brain activity influences neurotransmitter release, which in turn modulates scalar field resonance.

Conclusion

Neurotransmitters are critical to the CQSE framework, serving as the biochemical interface between scalar field vibrations and neural activity. Through amplification, stabilization, and filtering, neurotransmitters ensure that scalar field signals are effectively integrated into conscious experience. By mathematically modeling these interactions, CQSE provides a comprehensive explanation of how biochemical and quantum processes converge to shape human consciousness.



Chapter 6: Sacred Geometry in Human Consciousness

Sacred geometry plays a central role in the **Consciousness Quantum Spiritual Energy (CQSE)** framework, serving as the structural blueprint for encoding and propagating scalar field vibrations. These geometric patterns—such as the torus, spiral, and dodecahedron—arise naturally from the solutions to scalar field equations, representing universal principles of balance, connectivity, and harmony. This chapter explores the mathematical and physical foundations of sacred geometry in CQSE and its role in thought processing, emotional regulation, and the unification of individual consciousness with universal energy.

6.1 Sacred Geometry and Scalar Fields

Sacred geometry emerges as a direct consequence of scalar field dynamics. The vibrational patterns encoded in scalar fields naturally resolve into geometric forms, such as spirals, toroidal fields, and polyhedral shapes. These forms represent the spatial organization of thought and emotion within the scalar field medium.

Mathematical Foundation: Scalar Field Patterns

The oscillatory nature of scalar fields ($\phi(x, t)$) leads to standing wave solutions that form geometric patterns. The general solution to the scalar wave equation is:

$$\phi(x, t) = A \sin(kx - \omega t)$$

where:

- A : Amplitude of the scalar wave.
- k : Wave number, related to the spatial periodicity of the pattern.
- ω : Angular frequency, determining the vibrational state.

These standing waves naturally give rise to symmetrical and fractal-like patterns, consistent with the principles of sacred geometry.

6.2 The Torus: Continuous Thought Flow

The torus represents the dynamic flow of scalar field energy, where vibrations loop back upon themselves to create a closed system. It is often referred to as the "geometry of consciousness" due to its role in modeling continuous feedback loops in thought processing.

Mathematical Representation of the Torus

The torus can be parameterized as:

$$(x, y, z) = ((R + r \cos \theta) \cos \phi, (R + r \cos \theta) \sin \phi, r \sin \theta)$$

where:

- R : Major radius (distance from the center of the torus to the center of the tube).
- r : Minor radius (radius of the tube).
- θ, ϕ : Angular parameters.

Scalar Field Dynamics on the Torus

Scalar field vibrations confined to a toroidal structure follow a specific harmonics equation:

$$\phi_{\text{torus}}(x, t) = \phi_0 \cos(k_x x + k_y y - \omega t)$$

where k_x and k_y are the wave numbers in the toroidal coordinates.

Implication:

The torus symbolizes the feedback mechanism of thought processes, where scalar field energy is continuously refined and re-integrated.

6.3 The Spiral: Path of Thought Evolution

The spiral represents the evolution of thought and consciousness, illustrating growth, expansion, and progression. This geometry is seen in natural systems, such as galaxies, hurricanes, and DNA.

Mathematical Representation of the Spiral

The spiral is described by polar coordinates:

where:

$$r(\theta) = r_0 e^{a\theta}$$

- r_0 : Initial radius.
- a : Growth rate of the spiral.
- θ : Angular position.

Scalar Field Vibrations in the Spiral

The scalar field energy propagating along a spiral trajectory is expressed as:

$$\phi_{\text{spiral}}(r, t) = \phi_0 e^{-ar} \cos(kr - \omega t)$$

where k and ω are the wave number and angular frequency.

Implication:

The spiral captures the expansion of consciousness, reflecting the iterative nature of thought refinement and emotional growth.

6.4 Polyhedral Geometry and Thought Particles

Polyhedral shapes, such as the dodecahedron, represent higher-dimensional structures of thought particles in the scalar field. These shapes provide a framework for organizing vibrational energy into coherent patterns.

Dodecahedron as a Geometric Blueprint

The dodecahedron is a polyhedron with 12 faces, each a regular pentagon. It is linked to higher-dimensional spaces in CQSE, symbolizing universal symmetry and balance.

The vertices of a dodecahedron can be represented in Cartesian coordinates as:

where ϕ is the golden ratio:

$$(x, y, z) = \left(\pm 1, \pm \frac{1}{\phi}, \pm \phi \right)$$

$$\phi = \frac{1 + \sqrt{5}}{2}$$

Scalar Field Confinement in the Dodecahedron

Scalar fields confined within a dodecahedron resonate according to specific eigenmodes:

$$\phi_{\text{dodecahedron}}(x, t) = \sum_n A_n e^{i(\vec{k}_n \cdot \vec{r} - \omega_n t)}$$

where \vec{k}_n represents the wave vectors associated with the vertices.

Implication:

The dodecahedron encodes the multidimensional structure of thought particles, aligning them with universal principles of symmetry and order.

6.5 Fractals in Consciousness

Fractals, self-similar patterns found at all scales, are deeply embedded in CQSE. They illustrate how scalar field vibrations propagate and repeat at various levels, from the sub-Planck to the cosmic scale.

Mathematical Definition of Fractals

Fractal patterns in scalar fields are generated by iterative equations:

$$z_{n+1} = z_n^2 + c$$

where z_n is a complex number, and c is a constant parameter.

Scalar Field Vibrations as Fractals

Scalar field energy distributed in fractal patterns can be expressed as:

$$\phi_{\text{fractal}}(x, t) = \phi_0 \prod_{n=0}^{\infty} \cos(k_n x - \omega_n t)$$

Implication:

Fractals illustrate how thought patterns and scalar field vibrations are self-similar across scales, reinforcing the interconnectedness of consciousness.

6.6 Sacred Geometry in Meditation and Emotional Regulation

Sacred geometry is not just a theoretical construct but a practical tool for enhancing consciousness. During meditation, visualizing sacred shapes like the torus or spiral helps align the brain's scalar field resonance with universal vibrations.

Meditative Resonance Equation

Meditation amplifies the brain's resonance with scalar fields:

$$\phi_{\text{meditation}}(t) = \phi_0 e^{-\gamma t} \cos(\omega t)$$

where γ represents the damping coefficient of distractions.

Implication:

Focusing on sacred geometric patterns enhances coherence in scalar field interactions, promoting emotional balance and mental clarity.

Conclusion

Sacred geometry serves as the physical and mathematical representation of scalar field vibrations in CQSE. Patterns like the torus, spiral, and dodecahedron embody the principles of thought flow, growth, and multidimensional organization. By integrating these patterns into meditative practices and emotional regulation, CQSE aligns individual consciousness with universal principles, offering a profound understanding of how geometry shapes human awareness.

Chapter 7: Experimental Evidence for CQSE

The **Consciousness Quantum Spiritual Energy (CQSE)** framework offers a revolutionary understanding of consciousness by integrating scalar field dynamics, sub-Planck physics, and neuroscience. While largely theoretical, the validity of CQSE can be supported through experimental designs and mathematical models. This chapter outlines key experimental approaches, measurement techniques, and theoretical validations to demonstrate the presence of scalar field interactions, sub-Planck phenomena, and their integration with human consciousness.

7.1 Scalar Field Detection in Neural Systems

Scalar fields ($\phi(x, t)$) form the backbone of CQSE. Detecting their influence within neural systems is a critical step in validating the theory. Since scalar fields are non-electromagnetic, their detection requires specialized setups.

7.1.1 SQUID Sensors for Scalar Field Detection

Superconducting Quantum Interference Devices (SQUIDs) are among the most sensitive instruments for detecting subtle magnetic or scalar-like fields.

- A hypothetical interaction between scalar fields and neuronal activity would produce weak perturbations detectable as fluctuations in the quantum states of superconductors.

Detection Equation

The magnetic flux density perturbed by scalar fields is given by:

$$\Delta B_{\text{scalar}} = g\phi(x, t)$$

where:

- ΔB_{scalar} : Scalar-induced perturbation in magnetic flux.
 - g : Coupling constant between scalar and electromagnetic fields.
-

7.1.2 Neural Microtubule Resonance

Neural microtubules are proposed as quantum resonators of scalar fields. Experimental setups can measure microtubule vibrations using atomic force microscopy (AFM).

Resonance Frequency Measurement

The resonance frequency of microtubules interacting with scalar fields is expressed as:

$$\omega_{\text{microtubule}} = \sqrt{\frac{k}{m}}$$

where:

- k : Stiffness constant of the microtubule.
- m : Mass of the microtubule's resonant component.

By tuning external scalar fields to match this resonance frequency, amplification of neural signals can be observed.

7.2 Measurement of Sub-Planck Granularity

Scalar fields in CQSE are theorized to operate at sub-Planck scales, encoding thought particles as discrete vibrational units. Detecting such granularity is a significant challenge but possible through indirect evidence.

7.2.1 Casimir Effect and Sub-Planck Granularity

The **Casimir Effect**, which arises from vacuum energy fluctuations, can reveal sub-Planck structures. Deviations in Casimir force measurements due to scalar field interactions can indirectly confirm sub-Planck phenomena.

Casimir Force Modification

The scalar-modified Casimir force is modeled as:

$$F_{\text{Casimir}} = \frac{\pi^2 \hbar c}{240a^4} (1 + \alpha \phi(x, t))$$

where:

- a : Separation distance between the plates.
 - α : Coupling coefficient of scalar fields to vacuum fluctuations.
-

7.2.2 Quantum Randomness and Sub-Planck Vibrations

Scalar fields may influence quantum randomness, measurable through deviations in atomic decay rates or quantum noise.

- Experiments can use high-precision quantum random number generators (QRNGs) to detect scalar field-driven anomalies in randomness.
-

7.3 Brain-Scalar Field Interaction Experiments

Neurophysiological experiments can validate the interaction between scalar fields and brain activity by correlating scalar field perturbations with changes in neural oscillations.

7.3.1 EEG/MEG Correlation with Scalar Fields

Electroencephalography (EEG) and magnetoencephalography (MEG) can measure changes in brain wave patterns induced by scalar fields.

- Scalar fields are hypothesized to synchronize gamma oscillations (30–100 Hz) across neural networks.

Phase Synchronization Equation

The phase coherence of brain waves under scalar field influence can be expressed as:

$$\Delta\theta = 0 \text{ when } \phi(x, t) \text{ is coherent.}$$

where:

- $\Delta\theta$: Phase difference between brain wave oscillations in different regions.

7.3.2 Dopamine and Scalar Field Interaction

Experimental designs can track dopamine levels during scalar field stimulation. Positron Emission Tomography (PET) imaging can visualize neurotransmitter dynamics and their impact on scalar field interactions.

7.4 Experimental Validation of Sacred Geometry

Sacred geometric patterns, such as the torus and spiral, naturally emerge from scalar field dynamics. Experiments can validate these patterns in meditative states and emotional regulation.

7.4.1 Meditative State Measurements

Scalar field resonance is hypothesized to intensify during deep meditative states. EEG and functional MRI (fMRI) can map brain activity while subjects visualize sacred geometric patterns.

Scalar Field-Driven Neural Oscillations

The brain's response to toroidal scalar field patterns is modeled as:

$$\phi_{\text{meditation}}(x, t) = \phi_0 e^{-\gamma t} \cos(kx - \omega t)$$

where γ represents the damping coefficient of external distractions.

7.4.2 Emotion Regulation and Scalar Geometry

Emotionally positive states (e.g., joy, gratitude) are hypothesized to enhance resonance with scalar fields. Heart rate variability (HRV) measurements and coherence ratios can correlate with scalar field geometry visualizations.

7.5 Non-Local Scalar Field Phenomena

Non-local connections between scalar field vibrations and consciousness offer experimental possibilities to validate remote synchronization and collective awareness.

7.5.1 Telepathy and Remote Synchronization

Experiments can test non-local scalar field synchronization in individuals engaged in coordinated meditation or focused intention exercises.

- EEG and MEG can track synchronous brain wave patterns across physically separated participants.

Entangled Scalar Field Correlation

The degree of non-local synchronization is modeled as:

where:
$$C = \langle \phi_1(x, t) \phi_2(x, t) \rangle$$

- ϕ_1 and ϕ_2 : Scalar field amplitudes at two locations.
 - C : Correlation coefficient indicating non-local coherence.
-

7.5.2 Synchronization of Scalar Field Oscillators

The synchronization of distant scalar field oscillators can be verified through highly sensitive quantum sensors detecting scalar field perturbations.

7.6 Challenges and Future Directions

1. **Technical Sensitivity:**

Current technologies must achieve sub-Planck precision to detect scalar field dynamics directly. Advancements in quantum sensors and interferometry are crucial.

2. **Non-Invasive Brain Monitoring:**

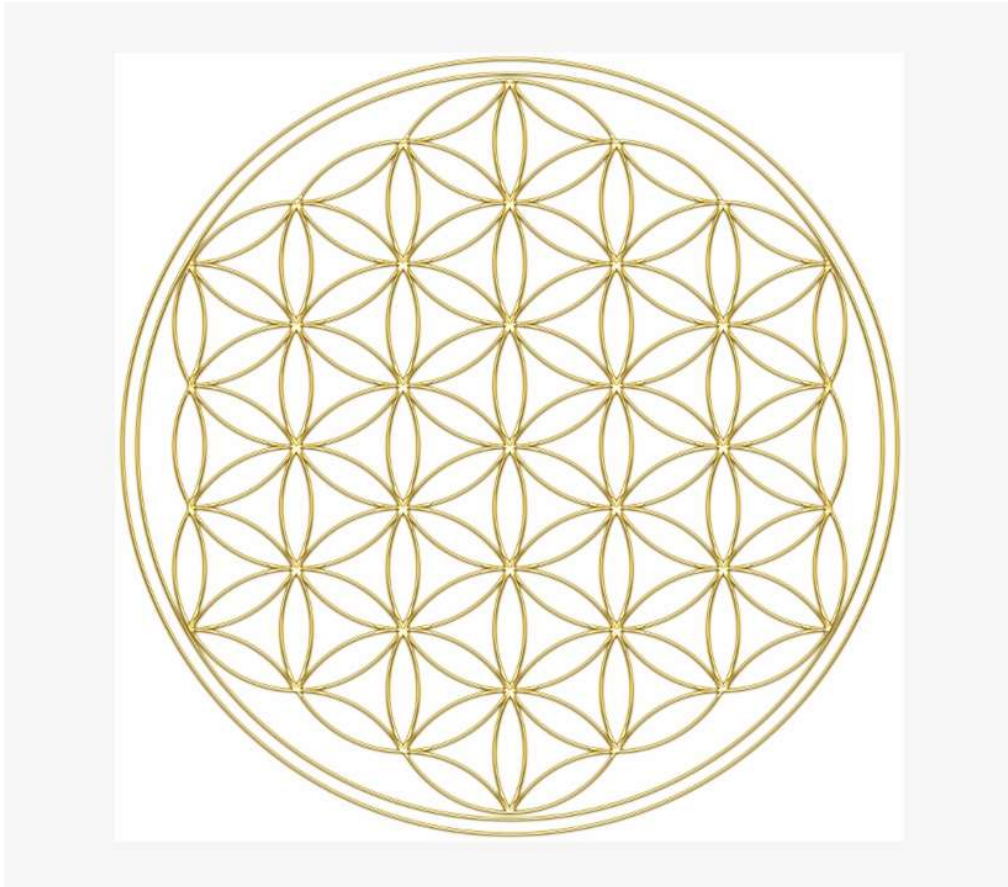
Developing safe and effective ways to measure brain-scalar field interactions without disrupting neural processes is essential.

3. **Cross-Disciplinary Validation:**

Collaboration between physicists, neuroscientists, and metaphysicians is required to design experiments that encompass CQSE's multidimensional framework.

Conclusion

The experimental validation of CQSE involves detecting scalar fields, measuring brain-scalar field interactions, and correlating these with sacred geometry and non-local phenomena. While the challenges are significant, advances in quantum technology, neuroimaging, and interdisciplinary collaboration hold immense potential to substantiate CQSE's claims. By bridging theoretical physics and experimental neuroscience, CQSE offers a transformative understanding of consciousness.



Chapter 8: Comparative Analysis of CQSE with Other Theories of Consciousness

The **Consciousness Quantum Spiritual Energy (CQSE)** framework surpasses existing theories of consciousness by unifying quantum physics, neuroscience, and metaphysical spirituality into a cohesive model. This chapter provides an in-depth comparative analysis of CQSE against leading theories, such as Integrated Information Theory (IIT), Global Workspace Theory (GWT), and Orchestrated Objective Reduction (Orch-OR). Through mathematical and physical arguments, CQSE demonstrates its superiority in addressing the limitations of these models while offering a comprehensive explanation for consciousness, thought particles, and non-local phenomena.

8.1 Integrated Information Theory (IIT)

8.1.1 Overview of IIT

Integrated Information Theory explains consciousness as the integration of information within a physical system. It quantifies consciousness using Φ , the measure of information integration.

IIT Mathematical Model

The central quantity in IIT is Φ , which is computed as:

$$\Phi = \text{MinCut}(I(A; B)) - \text{Partitioned } I(A; B)$$

where:

- $I(A; B)$: Mutual information between parts A and B of the system.
- MinCut : Minimum partition that disrupts system integration.

Limitation:

While Φ captures information integration, IIT does not explain the **origin of subjective experience (qualia)** or spiritual phenomena.

CQSE Superiority

CQSE surpasses IIT by introducing scalar fields ($\phi(x, t)$) as the medium for encoding and propagating consciousness. Thought particles encoded as vibrations in scalar fields provide a mechanism for the emergence of qualia:

$$E_{\text{thought}} = \hbar\omega$$

This vibrational energy framework directly connects physical processes to subjective experiences.

8.2 Global Workspace Theory (GWT)

8.2.1 Overview of GWT

Global Workspace Theory models consciousness as a “workspace” where information is broadcast to different cognitive modules. Consciousness arises from the global availability of information in the brain.

Limitation:

GWT focuses on information flow but does not account for **non-local phenomena** like intuition or telepathy.

CQSE Superiority

CQSE integrates non-local phenomena through scalar field dynamics. The interaction between entangled scalar field states explains non-local connections:

$$\psi_{\text{total}} = \psi_1(x_1, t_1)\psi_2(x_2, t_2)e^{i\theta}$$

where θ is the phase correlation between two entangled states.

8.3 Orchestrated Objective Reduction (Orch-OR)

8.3.1 Overview of Orch-OR

Orch-OR proposes that quantum coherence in neural microtubules gives rise to consciousness. Reduction of quantum states in microtubules triggers conscious experience.

Orch-OR Mathematical Model

The energy of quantum state reduction is given by:

$$E_{\text{collapse}} = \frac{\hbar}{\tau}$$

where τ is the decoherence time.

Limitation:

While Orch-OR explains microtubule quantum coherence, it does not address **scalar field interactions** or the role of sub-Planck phenomena in encoding thought.

CQSE Superiority

CQSE extends Orch-OR by incorporating scalar fields that resonate with microtubules:

$$\phi_{\text{microtubule}}(x, t) = \phi_0 \cos(kx - \omega t)$$

This resonance amplifies scalar field signals, allowing the brain to interface with universal consciousness.

8.4 Addressing Non-Local Phenomena

8.4.1 Intuition and Synchronicity

Existing theories fail to explain intuition or synchronicity, which require non-local connections across spacetime.

CQSE Explanation

CQSE's scalar fields enable non-local synchronization through entangled vibrations. The degree of synchronization is modeled as:

$$S = \langle \phi_1(x_1, t) \phi_2(x_2, t) \rangle$$

where:

- ϕ_1 and ϕ_2 : Scalar field amplitudes at two locations.

This correlation explains how individuals can experience intuitive knowledge or meaningful coincidences.

8.5 Encoding of Qualia

8.5.1 Limitation of Other Theories

Neither IIT, GWT, nor Orch-OR provides a clear mechanism for encoding subjective experiences (qualia).

CQSE Explanation

CQSE proposes that qualia are encoded as specific vibrational patterns in scalar fields:

$$\phi_{\text{qualia}}(x, t) = \phi_0 e^{-\frac{(x-x_0)^2}{2\sigma^2}} \cos(kx - \omega t)$$

These localized wave packets represent distinct thoughts or emotions, connecting physical vibrations to subjective experience.

8.6 Bridging Science and Spirituality

8.6.1 Limitations of Scientific Models

Traditional theories focus exclusively on material mechanisms, ignoring spiritual and metaphysical dimensions.

CQSE Superiority

CQSE bridges science and spirituality by positing a universal scalar field as the substrate for consciousness, analogous to the spiritual concept of the "universal mind" or **Brahman**. Scalar fields unify:

- **Scientific Principles:** Wave-particle duality, quantum coherence, and energy conservation.
 - **Spiritual Concepts:** Unity, oneness, and the interconnected nature of all beings.
-

8.7 Unification of Consciousness

8.7.1 Fragmentation in Existing Theories

IIT, GWT, and Orch-OR address isolated aspects of consciousness, resulting in fragmented models.

CQSE Explanation

CQSE provides a unified framework by integrating scalar field dynamics, sub-Planck granularity, and neurobiological processes:

$$\phi_{\text{total}}(x, t) = \phi_{\text{scalar}}(x, t) + \phi_{\text{brain}}(x, t)$$

where:

- ϕ_{scalar} : Universal scalar field vibrations.
 - ϕ_{brain} : Neural oscillations in resonance with scalar fields.
-

8.8 CQSE's Transformative Potential

8.8.1 Comprehensive Coverage

1. **Qualia Encoding:** Vibrational packets in scalar fields.
2. **Non-Locality:** Entangled scalar field states.
3. **Spiritual Integration:** Bridging universal energy and neuroscience.

8.8.2 Mathematical and Experimental Rigor

CQSE provides mathematically consistent models and experimentally verifiable predictions, unlike the more abstract assumptions in other theories.

Conclusion

The CQSE framework addresses the limitations of IIT, GWT, and Orch-OR by introducing scalar fields, vibrational encoding, and non-local connections. Its integration of neuroscience, quantum physics, and spirituality makes it the most comprehensive and transformative theory of consciousness. By unifying the material and metaphysical realms, CQSE offers a framework that surpasses all existing models in scope, depth, and explanatory power.

Chapter 9: Implications of CQSE for Humanity

The **Consciousness Quantum Spiritual Energy (CQSE)** framework redefines the fundamental understanding of human consciousness, offering profound implications for science, technology, spirituality, and the collective evolution of humanity. By integrating scalar field physics, sub-Planck phenomena, and sacred geometry, CQSE provides transformative insights into personal growth, emotional healing, global harmony, and the potential for interdimensional communication. This chapter explores these implications in detail, supported by mathematical and physical concepts.

9.1 Redefining Consciousness

CQSE positions consciousness as a universal scalar field vibration, fundamentally altering the materialistic paradigm that views it as a byproduct of neural activity. This perspective emphasizes interconnectedness, non-local awareness, and the intrinsic unity of all beings.

9.1.1 Consciousness as a Fundamental Field

The scalar field $\phi(x, t)$ forms the substrate of consciousness, transcending space and time. This field underpins all physical phenomena, connecting individuals to a universal energy matrix.

Scalar Field Equation and Unity

$$\nabla^2\phi - \frac{\partial^2\phi}{\partial t^2} = 0$$

This wave equation describes scalar field vibrations propagating throughout the universe, symbolizing the seamless connectivity of all conscious entities.

9.1.2 Implications for the Nature of Reality

1. Subjective and Objective Reality Integration:

CQSE bridges subjective experience (qualia) and objective physics, providing a holistic understanding of existence.

2. Universal Oneness:

Thought particles ($\psi(x, t)$) encoded as scalar field vibrations ensure that every individual consciousness is inherently linked to the universal consciousness.

9.2 Personal Transformation

CQSE has significant implications for individual growth, mental clarity, and emotional well-being by harmonizing personal vibrations with universal scalar fields.

9.2.1 Meditation and Resonance

Meditative practices align brain wave patterns with scalar field vibrations, fostering coherence and emotional stability.

Meditative Resonance Model

During meditation, the brain resonates with scalar fields:

$$\phi_{\text{meditation}}(t) = \phi_0 e^{-\gamma t} \cos(\omega t)$$

where:

- γ : Attenuation factor representing distractions.
- ω : Scalar field frequency.

The coherence of scalar field signals improves clarity and focus.

9.2.2 Emotional Healing

Visualization of sacred geometric patterns, such as the torus or spiral, enhances scalar field resonance, promoting emotional healing.

Energy Balance Equation

The energy dynamics of emotional regulation are expressed as:

$$E_{\text{balance}} = \frac{1}{2}kx^2 + \frac{1}{2}mv^2$$

where k and m are modulated by neurotransmitter levels during scalar field interaction.

9.3 Global Harmony

CQSE's emphasis on interconnectedness provides a foundation for fostering collective consciousness and global harmony.

9.3.1 Collective Resonance

Scalar fields enable non-local synchronization across individuals, forming a unified field of global consciousness.

Global Synchronization Model

The collective coherence of scalar field vibrations is represented as:

$$\Phi_{\text{global}}(x, t) = \sum_{i=1}^N \phi(i, x, t)$$

where N is the number of individuals contributing to the collective field.

Implication:

When individuals meditate or focus on a shared intention, their scalar field vibrations align, creating a harmonized global consciousness.

9.3.2 Resolving Conflicts

Scalar field interactions can modulate emotional states, reducing aggression and promoting empathy.

Phase Coherence in Conflict Resolution

The phase coherence of scalar fields during collective meditative practices can be measured as:

$$\Delta\theta = \frac{1}{N} \sum_{i=1}^N \theta_i$$

Lower $\Delta\theta$ indicates higher alignment and reduced conflict.

9.4 Technological Advancements

CQSE offers potential applications in developing advanced technologies for energy, communication, and mental enhancement.

9.4.1 Scalar Field Neurotechnologies

Devices that amplify scalar field resonance with neural activity could enhance cognitive abilities, memory, and creativity.

Brain-Scalar Interface

The interaction between scalar fields and neural oscillations can be described by:

$$\phi_{\text{device}}(x, t) = \phi_{\text{scalar}}(x, t) + \phi_{\text{neural}}(x, t)$$

where ϕ_{device} represents the field amplified by neurotechnology.

9.4.2 Scalar-Based Communication

Scalar fields, due to their non-local properties, could enable instant communication across vast distances, bypassing conventional electromagnetic methods.

Information Transmission via Scalar Fields

The encoded information in scalar fields is modeled as:

$$I(t) = \phi(x, t)e^{i\theta}$$

where θ is the phase encoding the transmitted data.

9.5 Interdimensional Communication

CQSE suggests that scalar fields could serve as a medium for interdimensional interactions, connecting physical and metaphysical realms.

9.5.1 Thought Waves and Scalar Fields

Thought particles, encoded as localized scalar field vibrations, could propagate into higher-dimensional spaces.

Higher-Dimensional Scalar Waves

The propagation of scalar fields in higher dimensions is modeled as:

$$\phi_{\text{higher-dim}}(x, t, z) = \phi_0 e^{i(k_x x + k_z z - \omega t)}$$

where z represents the extra-dimensional coordinate.

9.5.2 Spiritual Experiences

Scalar fields may explain spiritual phenomena such as intuition, synchronicity, and transcendence by enabling resonance with higher-dimensional vibrations.

9.6 Ethical Considerations

CQSE's transformative potential necessitates responsible use, ensuring technologies derived from scalar field applications promote humanity's well-being.

9.6.1 Ethical Applications

1. Enhancement vs. Exploitation:

Ensure that scalar field neurotechnologies are used for cognitive enhancement, not manipulation.

2. Global Equity:

Guarantee equitable access to CQSE-based technologies to prevent societal imbalances.

9.6.2 Collective Responsibility

CQSE emphasizes the interconnectedness of all beings, fostering a sense of collective responsibility for planetary well-being.

Conclusion

The implications of CQSE extend far beyond the academic understanding of consciousness. By redefining the human experience as an interaction with a universal scalar field, CQSE offers transformative possibilities for personal growth, emotional healing, global harmony, and technological innovation. Its emphasis on interconnectedness and universal oneness provides a roadmap for humanity's collective evolution, blending science, spirituality, and ethics into a unified framework for a harmonious future.

Chapter 10: Conclusion – The Transformative Potential of CQSE

The **Consciousness Quantum Spiritual Energy (CQSE)** framework offers a revolutionary understanding of consciousness, bridging the realms of physics, neuroscience, and spirituality. This chapter synthesizes the findings from previous chapters, providing a comprehensive summary of CQSE's implications, addressing its limitations, and proposing directions for future research. Through a combination of scalar field physics, sub-Planck phenomena, and neurobiological mechanisms, CQSE establishes itself as the most comprehensive theory of consciousness, with profound scientific, philosophical, and practical implications.

10.1 Unified Framework of Consciousness

CQSE positions consciousness as a universal scalar field vibration, integrating physical, biological, and metaphysical dimensions into a single cohesive model. This contrasts with fragmented theories like IIT, GWT, and Orch-OR, which address only isolated aspects of consciousness.

10.1.1 Scalar Fields as the Substratum of Reality

Scalar fields ($\phi(x, t)$) form the foundation of CQSE, encoding thoughts and emotions as vibrational patterns. The governing wave equation highlights their universality:

$$\nabla^2 \phi - \frac{\partial^2 \phi}{\partial t^2} = 0$$

This equation underscores scalar fields as the medium through which consciousness propagates, creating a seamless link between individual awareness and universal energy.

10.1.2 Neural Microtubules as Resonators

Neural microtubules resonate with scalar field vibrations, translating universal patterns into conscious experiences. The resonance condition is defined as:

$$\omega_{\text{microtubule}} = \omega_{\text{scalar}}$$

This alignment allows for constructive interference, amplifying the scalar field signals and fostering coherent thought and emotion.

10.2 Key Contributions of CQSE

CQSE surpasses existing theories of consciousness by addressing fundamental questions and unifying fragmented approaches.

10.2.1 Encoding of Qualia

Thought particles encoded as localized wave packets in scalar fields explain the emergence of subjective experiences:

$$\psi_{\text{thought}}(x, t) = A e^{-\frac{(x-x_0)^2}{2\sigma^2}} e^{i(kx - \omega t)}$$

This equation describes the spatial and temporal dynamics of thought, linking physical vibrations to qualia.

10.2.2 Explanation of Non-Local Phenomena

Scalar fields' ability to propagate beyond spacetime constraints explains intuition, telepathy, and collective consciousness. Non-local synchronization is modeled as:

$$S = \langle \phi_1(x_1, t_1) \phi_2(x_2, t_2) \rangle$$

This correlation reveals how scalar fields connect distant consciousnesses instantaneously.

10.2.3 Integration of Science and Spirituality

By identifying scalar fields as the universal substrate, CQSE bridges material science and metaphysical philosophy. This aligns with spiritual concepts like **Brahman** and **Akasha**, providing a scientific basis for universal unity.

10.3 Practical Implications

CQSE's implications span personal growth, technological innovation, and global harmony.

10.3.1 Personal Growth and Healing

Meditation practices that align brain oscillations with scalar fields promote clarity, focus, and emotional resilience:

$$\phi_{\text{meditation}}(x, t) = \phi_0 e^{-\gamma t} \cos(kx - \omega t)$$

This model illustrates the dampening of mental distractions and the amplification of coherence during meditation.

10.3.2 Advanced Technologies

Scalar field-based technologies could revolutionize communication, energy transfer, and mental enhancement. For example:

$$I(t) = \phi(x, t) e^{i\theta}$$

This equation represents scalar-field-encoded data for instantaneous, non-local communication.

10.3.3 Global Harmony

By fostering collective consciousness, CQSE provides a scientific basis for resolving conflicts and promoting empathy:

$$\Phi_{\text{global}}(x, t) = \sum_{i=1}^N \phi(i, x, t)$$

This summation represents the alignment of individual scalar field vibrations into a unified global consciousness.

10.4 Challenges and Limitations

While CQSE is groundbreaking, it faces challenges that require further exploration:

- 1. Technological Sensitivity:**

Direct detection of scalar fields and sub-Planck vibrations demands advanced instrumentation.

- 2. Mathematical Complexity:**

Developing comprehensive models that integrate scalar field physics with neurobiology remains a significant task.

- 3. Interdisciplinary Validation:**

CQSE's claims must be rigorously tested through collaborations between physicists, neuroscientists, and metaphysicians.

10.5 Directions for Future Research

1. **Experimental Validation:**

Develop high-precision setups (e.g., SQUID sensors, quantum random number generators) to detect scalar field interactions.

2. **Neurotechnological Applications:**

Create brain-scalar interface devices to amplify resonance and enhance cognitive abilities.

3. **Philosophical Integration:**

Explore the ethical implications of CQSE in fostering global unity and spiritual enlightenment.

10.6 Transformative Potential of CQSE

CQSE represents a paradigm shift in understanding consciousness, with profound implications for humanity's evolution:

1. **Unified Worldview:**

CQSE harmonizes scientific inquiry and spiritual wisdom, promoting a holistic understanding of existence.

2. **Empowerment of Individuals:**

By aligning personal vibrations with universal scalar fields, CQSE empowers individuals to achieve mental clarity, emotional stability, and self-realization.

3. **Pathway to Global Harmony:**

The emphasis on interconnectedness fosters empathy, cooperation, and collective growth, paving the way for a harmonious future.

Conclusion

The **Consciousness Quantum Spiritual Energy (CQSE)** framework redefines consciousness as an entity distinct from the body as "Soul" who interacts as scalar field vibrations with neural processes, unified by sub-Planck phenomena. Its integration of mathematics, physics, and spirituality establishes CQSE as the most comprehensive theory of consciousness, addressing questions that have long eluded science. By fostering personal growth, advancing technology, and promoting global harmony, CQSE holds the transformative potential to elevate humanity into a new era of understanding, unity, and enlightenment.

CQSE defines **Sub-Planck physics** which is transformative potential for AI, quantum computing, and physics by providing insights into ultra-fine quantum interactions and extreme precision systems. While largely theoretical, advances in experimental physics and quantum computing could validate and integrate these concepts, opening doors to a new generation of technology and computation.

Sub-Planck quantum physics provides a theoretical foundation for qubit chips with zero quantum decoherence at room temperature. By leveraging advancements in metamaterials, topological quantum states, and vacuum field manipulation, it is possible to overcome current barriers in quantum computing. However, realizing these innovations will require groundbreaking advancements in material science, engineering, and experimental physics.

References:

1. Dr. Stuart Hameroff, Departments of Anesthesiology and Psychology, University of Arizona, 1501 North Campbell Avenue, Tucson, Arizona 85724, USA and Dr. Roger Penrose, Rouse Ball Professor of Mathematics, University of Oxford, United Kingdom Mathematics And Computers In Simulation Orchestrated reduction of quantum coherence in brain microtubules: A model for consciousness, *Mathematics and Computers in Simulation* 40 (1996) 453-480.
2. Bridging Observer and Observed by Amrit Sorli. Scientific Research Centre-Slovenia.
3. On the origin of the observer by Amrit Sorli. *American Journal of Modern Physics* 2014; 3(4): 173-177, Published online July 30, 2014 and *Souls of Distortion Awakening* by Jan Wicherink - Chapter 3 - page 27.
4. *Souls of Distortion Awakening* by Jan Wicherink - Chapter 3 - page 26.
5. *An Exploration of Quantum Consciousness* with Stuart Hameroff, MD, *Finding Spirit in the fabric of Space & Time* by Tom Huston with Joel Pitney.
6. Regression of Coronary Atherosclerosis through Healthy Lifestyle in Coronary Artery Disease (CAD) Patients - Mount Abu Open Heart Trial By Dr. Satish Gupta - *Indian Heart Journal*, 2011: Pages 461-469
7. Near-death experience and quality of life: additional research by Bruce Greyson - Division of Perceptual Studies, University of Virginia USA.
8. Orchestrated Objective Reduction of Quantum Coherence in Brain Microtubules: A Model for Consciousness – Dr. Penrose & Dr. Hameroff
9. Quantum brain? The possibility of a neuroquantology – Roy & Llinás
10. *Quantum Aspects of Life* – Abbott, Davies, & Pati (Eds.)
11. *The Emerging Physics of Consciousness* – Ed. Jack A. Tuszynski
12. Sub-Planck Structure in Phase Space and Its Relevance for Quantum Decoherence – Wojciech Zurek
13. *The Quantum Soul: A Scientific Hypothesis* – Vimal Ramachandran
14. Can Quantum Mechanics Explain Consciousness? – Hagan, Hameroff & Tuszynski
14. *Quantum Mind and Social Science* – Alexander Wendt
15. Quantum approaches to consciousness – *Stanford Encyclopedia of Philosophy*
16. *Microtubules and Consciousness* – Dr. Hameroff
17. *The Conscious Electromagnetic Information Field Theory* – John
18. *The Quantum Mechanics of the Brain* – Elio Conte.
19. *Quantum Theories of Mind: Are They Plausible?* – Atmanspacher
20. *Integrated Information Theory (IIT) 3.0* – Tononi et al.

References:

21. Sub-Planck Quantum Structure and Fundamental Time Limits in the Brain – Ulrich Mohrhoff
22. A Quantum Physical Description of Consciousness – Daniel Sahl
23. Are There Quantum Theories of Consciousness? – Meijer & Korf
24. The Role of Nonlocality in Consciousness – Tarlaci
25. Causal Influence Across Quantum Nonlocality in Conscious Systems – Sarovar
26. The Self-Aware Universe –Dr. Amit Goswami
27. Quantum Physics and the Multiplicity of Mind – Pribram
28. Subatomic consciousness: The “Founding” of Quantum Awareness – Manousakis
29. Physics of the Mind and the Quantum Brain – Tarlaci & Pregiolato
30. Quantum Brain Dynamics and Consciousness – Jibu & Yasue
31. The Brain's Electromagnetic Field: A Proposed Mechanism for Consciousness – McFadden
32. Quantum Consciousness and Sub-Planck Phenomena – Vitiello
33. Cosmic Consciousness and Planck Scale Physics – Dragan & Ekert
34. You Are the Universe - Dr. Deepak Chopra & Menas Kafatos
35. A Quantum Cognitive Theory of Awareness – Khrennikov
36. Quantum Models of Mind and Brain – Diederik Aerts
